

NH fuse switch-discon. size 1, 250 A, panel mounting (33201000)



The picture may show a similar product.

Description

Part No.: **33201 000**

QUADRON Panel

NH fuse switch-discon. size 1, 250 A, panel mounting

screw M10

for mounting plate

System

Panel

Advantages of the product

For safe connection of the leads, the shock protection is split into 2.

Self-closing inspection holes are available in the cover.

Product group 09

Subgroup 06

pack size 1

EAN 4021267332013

ECLASS 14.0 27142108
ETIM 5.0 EC001040
ETIM 8.0 EC001040
ETIM 10.0 EC001040

Approvals

Standards

IEC 60947-1:2020
IEC 60947-3:2020 AC ratings only
UL 4248-1

Approvals

IEC (CB) , UL , VDE , CCC , DNV GL



for UL feeder circuits >250V

type number: QCB-NH1
EAC Type: NH

UL file: E230163, UL category (for USA): IZLT2 <https://www.ul.com>
CCC certificate: 2012010302563561

Technical data

for fuse links size:	NH 1
fuse links acc. to standard:	IEC / HD 60269-2
permitted power dissipation of the fuse-link:	23 W
requirements for contact parts:	Fuse links with silver-plated contact pieces recommended. For fuse links with nickel-plated contact pieces, a reduction factor of 0.8 is to be observed.

Details IEC

Standards

IEC 60947-1:2020
IEC 60947-3:2020 AC ratings only

Electrical data IEC

rated current (IEC): 250 A

rated voltage (IEC) AC: 800 V

rated voltage (IEC) DC: 440 V

rated isolation voltage U_i AC: 800 V

rated isolation voltage U_i DC: 500 V

rated surge voltage U_{imp} : 6 kV

Utilisation category AC (IEC 60947-3): AC-21B (690 V / 250A)

AC-22B (400 V / 250A)

cond. short-circuit current with fuses (AC): 100 kA / 690 V

approved with fuse links of operation class: gG

rated peak withstand current I_{pk} max.: 13.7 kA

rated short-time withstand current I_{CW} (1.0 s) max.: 8.1 kA

I_{CW} approved with: Trennmesser

power dissipation of the article:

The power dissipation at a typical load of 80 % results to 9.0 W.

(The power dissipation at full load would be 14.1 W.)

Supplementary data IEC

The following values have been verified with tests under certain conditions. Please ask Wöhner for this conditions before designing your panel.

max. permitted voltage (IEC) AC: 725 V

max. permitted voltage (IEC) DC: 800 V

further utilisation category DC (IEC 60947-3): DC specifications: 2 current paths (L1,L3) in series
DC-20B (440V)

DC-20B (1000V) at pollution degree 2

visible information required if used at more than 440V DC: do not switch under load

A fuse-combination unit acc. to IEC 60947-3 can only be operated at a higher voltage than its rated voltage, if it is used as a fuse-disconnector without breaking capacity, up to its max. rated insulation voltage and labelled as such.

min. permitted operation temperature -40°C

max. permitted operation temperature 55°C

Entsprechend den angegebenen AC- und DC- Schalteigenschaften und unter Berücksichtigung der Überlastbedingungen, sind gewisse Abstände zu geerdeten Metallteilen einzuhalten. Nähere Informationen auf Anfrage.

Bei Verwendung als Trennschalter ist die Einhaltung der Abstände nicht erforderlich.

Degree of protection IP30 at front, degree of protection near terminal depends on installation

Details UL

Standards

UL 4248-1

for UL feeder circuits >250V

Electrical data UL

rated current (UL): 250 A

rated voltage (UL) AC: 600 V

rated frequency (UL): 50 / 60 Hz

SCCR: 100 kA

Mechanical data

W x H x D: 184 x 243 x 112

weight: 171.0 kg/100

poles: 3-pole

Mounting: for mounting plate

front degree of protection: IP30

Terminal points

screw connection

M10

screw drive: SW16

Md min.: 20.0 Nm

Md max.: 30.0 Nm

torque (UL): 221 lb-in

Material properties

halogen-free: No

Application notes

based on the AC and DC switching capacities and considering the overload conditions as given in the above mentioned standards the following distances to earthed metal parts have to be respected:

required spacing top: 30 mm

required spacing at sides: 20 mm

A fuse-combination unit acc. to IEC 60947-3 can only be operated at a higher voltage than its rated voltage, if it is used as a fuse-disconnector without breaking capacity, up to its max. rated insulation voltage and labelled as such.

permitted power dissipation of the fuse-link: 23 W

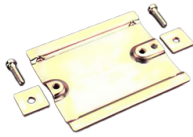
requirements for contact parts: Fuse links with silver-plated contact pieces recommended.

For fuse links with nickel-plated contact pieces, a reduction factor of 0.8 is to be observed.

for UL feeder circuits >250V

Accessories

accessories for mounting



33158 000

rapid mounting set

for 2 mounting rails, rails centre distance 125 mm or 150 mm
size 1 - 2

connection accessories



33145 000

prism terminal, double, for Cu cables

2x 35 - 70 mm²

for: QCB-NH1, QCS-NH1, QCS-320



33163 000

clamp connector for Cu cables

70 - 150 mm²

for: QCB-NH2, LTS-F 400, LTS 630



33166 000

prism terminal, single, for Cu cables

35 - 150 mm²

QCB-NH1, QCS-NH1, QCS-320

for: QCB-NH1, QCS-NH1, QCS-320



33909 000

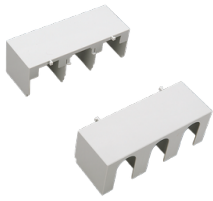
box terminal for Cu cables

35 - 150 mm²

QCB-NH1, QCS-NH1, QCS-320

for: QCB-NH1, QCS-NH1, QCS-320

covers



33142 000

cover for cable lugs, top / bottom attachable
for: QCB-NH1, QCS-NH1, QCS-320



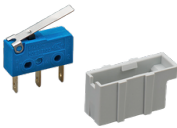
33152 000

trim frame, single
215 x 330
size 1



33155 000

barrier for handle
for NH fuse-switch disconnecter size 1-3
for closing of handle area from rear



33917 000

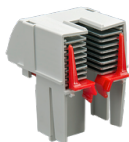
pilot switch
changeover 250 V AC / 5 A, 30 V DC / 4 A
QUADRON®60Classic, QUADRON®Panel size 1

further accessories



33157 000

lid interlock
for sealing wire or 3 padlocks with shackle of 4 - 7 mm
Size 1 - 3



33918 000

arcing chamber
retrofit package for higher utilisation category
for: QCB-NH1

<https://pim.woehner.de/EN/INT/1000046764>