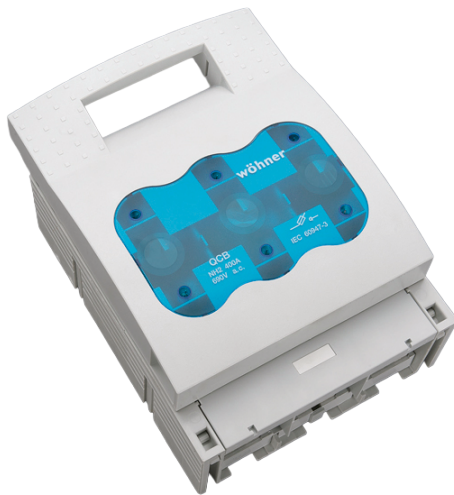


## NH fuse switch-discon. size 2, 400 A, panel mounting (33202000)



The picture may show a similar product.

### Description

Part No.: **33202 000**

QUADRON Panel

NH fuse switch-discon. size 2, 400 A, panel mounting

screw M10

for mounting plate

### System

Panel

### Advantages of the product

Disconnectors are equipped with arc chambers.

The shock protection is split into 2 for safe connection of the conductors.

Self-closing inspection holes are available in the cover.

**Product group** 09

**Subgroup** 09

pack size 1  
EAN 4021267332020

ECLASS 14.0 27142108  
ETIM 5.0 EC001040  
ETIM 8.0 EC001040  
ETIM 10.0 EC001040

## Approvals

### Standards

IEC 60947-1:2020  
IEC 60947-3:2020 AC ratings only  
UL 4248-1

### Approvals

IEC (CB) , UL , CCC , DNV GL



for UL feeder circuits >250V

type number: LTS-2  
EAC Type: NH

UL file: E230163, UL category (for USA): IZLT2 <https://www.ul.com>  
CCC certificate: 2004010302117262

## Technical data

for fuse links size:	NH 2
fuse links acc. to standard:	IEC / HD 60269-2
permitted power dissipation of the fuse-link:	34 W
requirements for contact parts:	Fuse links with silver-plated contact pieces recommended. For fuse links with nickel-plated contact pieces, a reduction factor of 0.8 is to be observed.

## Details IEC

### Standards

IEC 60947-1:2020

IEC 60947-3:2020 AC ratings only

### Electrical data IEC

rated current (IEC): 400 A

rated voltage (IEC) AC: 800 V

rated voltage (IEC) DC: 440 V

rated isolation voltage  $U_i$  AC: 800 V

rated isolation voltage  $U_i$  DC: 500 V

rated surge voltage  $U_{imp}$ : 6 kV

Utilisation category AC (IEC 60947-3): AC-22B (690V/ 400A)

AC-22B (800V/ 200A)

AC-23B (690V/ 315A)

AC-23B (500V/ 400A)

cond. short-circuit current with fuses (AC): 50 kA / 690 V

approved with fuse links of operation class: gG

rated peak withstand current  $I_{pk}$  max.: 27.2 kA

rated short-time withstand current  $I_{cW}$  (1.0 s) max.: 13.2 kA

$I_{cW}$  approved with: Trennmesser

power dissipation of the article:

The power dissipation at a typical load of 80 % results to 14.1 W.

(The power dissipation at full load would be 22.0 W.)

### Supplementary data IEC

The following values have been verified with tests under certain conditions. Please ask Wöhner for this conditions before designing your panel.

max. permitted voltage (IEC) DC: 800 V

further utilisation category AC (IEC 60947-3): AC-20B (1000V) at pollution degree 2  
visible information required if used at more than 690V AC: do not switch under load

further utilisation category DC (IEC 60947-3): DC specifications: 2 current paths (L1,L3) in series  
DC-22B (440V)  
DC-21B (440V)  
DC-20B (1000V) at pollution degree 2

visible information required if used at more than 440V DC: do not switch under load

A fuse-combination unit acc. to IEC 60947-3 can only be operated at a higher voltage than its rated voltage, if it is used as a fuse-disconnector without breaking capacity, up to its max. rated insulation voltage and labelled as such.

min. permitted operation temperature -40°C

max. permitted operation temperature 55°C

Entsprechend den angegebenen AC- und DC- Schalteigenschaften und unter Berücksichtigung der Überlastbedingungen, sind gewisse Abstände zu geerdeten Metallteilen einzuhalten. Nähere Informationen auf Anfrage.

Bei Verwendung als Trennschalter ist die Einhaltung der Abstände nicht erforderlich.

Degree of protection IP30 at front, degree of protection near terminal depends on installation

## Details UL

### Standards

UL 4248-1

for UL feeder circuits >250V

### Electrical data UL

rated current (UL): 400 A

rated voltage (UL) AC: 600 V

rated frequency (UL): 50 / 60 Hz

SCCR: 100 kA

### Mechanical data

W x H x D: 210 x 288 x 128

weight: 362.0 kg/100

poles: 3-pole

Mounting: for mounting plate

front degree of protection: IP30

### Terminal points

screw connection

M10

screw drive: SW16

Md min.: 30.0 Nm

Md max.: 35.0 Nm

### Material properties

halogen-free: Yes

## Application notes

based on the AC and DC switching capacities and considering the overload conditions as given in the above mentioned standards the following distances to earthed metal parts have to be respected:

required spacing top: 30 mm

required spacing at sides: 20 mm

A fuse-combination unit acc. to IEC 60947-3 can only be operated at a higher voltage than its rated voltage, if it is used as a fuse-disconnector without breaking capacity, up to its max. rated insulation voltage and labelled as such.

permitted power dissipation of the fuse-link: 34 W

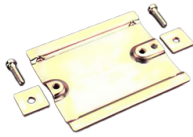
requirements for contact parts: Fuse links with silver-plated contact pieces recommended.

For fuse links with nickel-plated contact pieces, a reduction factor of 0.8 is to be observed.

for UL feeder circuits >250V

# Accessories

## accessories for mounting



**33158 000**

rapid mounting set

for 2 mounting rails, rails centre distance 125 mm or 150 mm  
size 1 - 2

## connection accessories



**33146 000**

prism terminal, double, for Cu cables

2x 70 - 120 mm<sup>2</sup>

size 2



**33164 000**

clamp connector for Cu cables

120 - 240 mm<sup>2</sup>

for: QCB-NH2, LTS-F 400, LTS 630



**33167 000**

prism terminal, single, for Cu cables

50 - 240 mm<sup>2</sup>

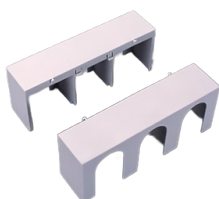


**33271 000**

extension for 2 cable lugs

size 1 - 2

## covers

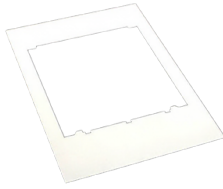


**33143 000**

cover for cable lugs, top / bottom attachable

for QCB-NH2

for: QCB-NH2



**33153 000**  
trim frame, single  
248 x 330  
size 2



**33155 000**  
barrier for handle  
for NH fuse-switch disconnecter size 1-3  
for closing of handle area from rear



**33418 000**  
connection shroud  
for NH fuse-switch-disconnector size 2

further accessories



**33156 000**  
pilot switch  
changeover 250 V AC / 5 A, 30 V DC / 4 A



**33157 000**  
lid interlock  
for sealing wire or 3 padlocks with shackle of 4 - 7 mm  
Size 1 - 3

<https://pim.woehner.de/EN/INT/1000046816>