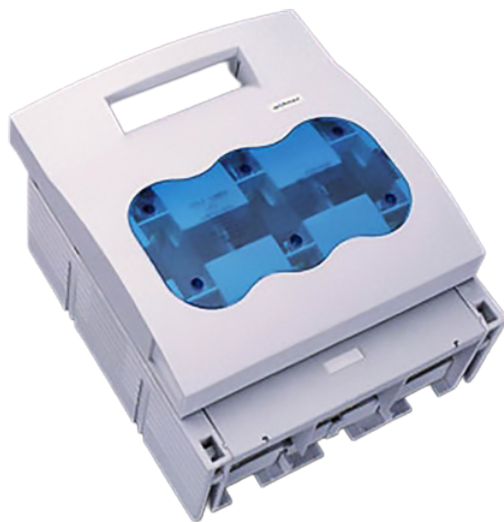


## NH fuse switch-discon. size 3, 630 A, panel mounting (33203000)



The picture may show a similar product.

### Description

Part No.: **33203 000**

QUADRON Panel

NH fuse switch-discon. size 3, 630 A, panel mounting

screw M12

for mounting plate

### System

Panel

### Advantages of the product

Disconnectors are equipped with arc chambers.

The shock protection is split into 2 for safe connection of the conductors.

Self-closing inspection holes, which can be punched out, are available in the cover.

**Product group** 09

**Subgroup** 12

pack size 1  
EAN 4021267332037

ECLASS 14.0 27142108  
ETIM 5.0 EC001040  
ETIM 8.0 EC001040  
ETIM 10.0 EC001040

## Approvals

### Standards

IEC 60947-1:2020  
IEC 60947-3:2020 AC ratings only  
UL 4248-1

### Approvals

IEC (CB) , UL , CCC , DNV GL



for UL feeder circuits >250V

type number: LTS-3  
EAC Type: NH

UL file: E230163, UL category (for USA): IZLT2 <https://www.ul.com>  
CCC certificate: 2004010302117263

## Technical data

for fuse links size:	NH 3
fuse links acc. to standard:	IEC / HD 60269-2
permitted power dissipation of the fuse-link:	48 W
requirements for contact parts:	Fuse links with silver-plated contact pieces recommended. For fuse links with nickel-plated contact pieces, a reduction factor of 0.8 is to be observed.

## Details IEC

### Standards

IEC 60947-1:2020

IEC 60947-3:2020 AC ratings only

### Electrical data IEC

rated current (IEC): 630 A

rated voltage (IEC) AC: 800 V

rated voltage (IEC) DC: 440 V

rated isolation voltage  $U_i$  AC: 800 V

rated isolation voltage  $U_i$  DC: 500 V

rated surge voltage  $U_{imp}$ : 6 kV

Utilisation category AC (IEC 60947-3): AC-22B (690V/ 630A)

AC-22B (800V/ 315A)

AC-23B (690V/ 500A)

AC-23B (500V/ 630A)

cond. short-circuit current with fuses (AC): 50 kA / 690 V

approved with fuse links of operation class: gG

rated peak withstand current  $I_{pk}$  max.: 35.2 kA

rated short-time withstand current  $I_{CW}$  (1.0 s) max.: 15.1 kA

$I_{CW}$  approved with: Trennmesser

power dissipation of the article:

The power dissipation at a typical load of 80 % results to 23.0 W.

(The power dissipation at full load would be 36.0 W.)

### Supplementary data IEC

The following values have been verified with tests under certain conditions. Please ask Wöhner for this conditions before designing your panel.

max. permitted voltage (IEC) DC: 800 V

further utilisation category AC (IEC 60947-3):

AC-20B (1000V) bei Verschmutzungsgrad 2

further utilisation category DC (IEC 60947-3):

DC specifications: 2 current paths (L1,L3) in series

DC-22B (440V)

DC-21B (440V)

DC-20B (1000V) at pollution degree 2

visible information required if used at more than 440V

DC: do not switch under load

A fuse-combination unit acc. to IEC 60947-3 can only be operated at a higher voltage than its rated voltage, if it is used as a fuse-disconnector without breaking capacity, up to its max. rated insulation voltage and labelled as such.

min. permitted operation temperature -40°C

max. permitted operation temperature 55°C

Entsprechend den angegebenen AC- und DC- Schalteigenschaften und unter Berücksichtigung der Überlastbedingungen, sind gewisse Abstände zu geerdeten Metallteilen einzuhalten. Nähere Informationen auf Anfrage.

Bei Verwendung als Trennschalter ist die Einhaltung der Abstände nicht erforderlich.

Degree of protection IP30 at front, degree of protection near terminal depends on installation

## Details UL

### Standards

UL 4248-1

for UL feeder circuits >250V

### Electrical data UL

rated current (UL): 600 A

rated voltage (UL) AC: 600 V

rated frequency (UL): 50 / 60 Hz

SCCR: 100 kA

## Mechanical data

W x H x D: 256 x 300 x 143

weight: 490.0 kg/100

poles: 3-pole

Mounting: for mounting plate

front degree of protection: IP30

## Terminal points

screw connection

M12

screw drive: SW18

Md min.: 35.0 Nm

Md max.: 40.0 Nm

Not suitable for aluminium cables !

## Material properties

halogen-free: Yes

## Application notes

Not suitable for aluminium cables !

based on the AC and DC switching capacities and considering the overload conditions as given in the above mentioned standards the following distances to earthed metal parts have to be respected:

required spacing top: 50 mm

required spacing at sides: 30 mm

A fuse-combination unit acc. to IEC 60947-3 can only be operated at a higher voltage than its rated voltage, if it is used as a fuse-disconnector without breaking capacity, up to its max. rated insulation voltage and labelled as such.

permitted power dissipation of the fuse-link: 48 W

requirements for contact parts: Fuse links with silver-plated contact pieces recommended.

For fuse links with nickel-plated contact pieces, a reduction factor of 0.8 is to be observed.

for UL feeder circuits >250V

# Accessories

## connection accessories



**33147 000**  
prism terminal, double, for Cu cables  
2x 150 mm<sup>2</sup>  
size 3



**33165 000**  
clamp connector for Cu cables  
150 - 300 mm<sup>2</sup>  
for: QCB-NH2, LTS-F 400, LTS 630



**33168 000**  
prism terminal, single, for Cu and Al cables  
150 - 300 mm<sup>2</sup>  
size 3

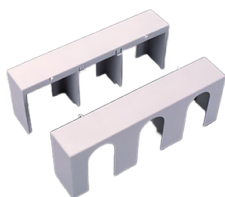


**33385 000**  
prism terminal, double, for Cu cables  
2x 185 mm<sup>2</sup>  
size 3



**33272 000**  
extension for 2 cable lugs  
size 3

## covers



**33144 000**  
cover for cable lugs, top / bottom attachable  
for QCB-NH3  
for: QCB-NH3



**33154 000**  
trim frame, single  
290 x 330  
size 3



**33155 000**  
barrier for handle  
for NH fuse-switch disconnecter size 1-3  
for closing of handle area from rear



**33419 000**  
connection shroud  
for NH fuse-switch-disconnector size 3, max. 600 A

further accessories



**33156 000**  
pilot switch  
changeover 250 V AC / 5 A, 30 V DC / 4 A



**33157 000**  
lid interlock  
for sealing wire or 3 padlocks with shackle of 4 - 7 mm  
Size 1 - 3

<https://pim.woehner.de/EN/INT/1000046865>